

LITTLE DAVID 

CASE SEALER LD-16 AR FULLY AUTOMATIC RANDOM CASE SEALING



The Little David * LD-16AR is the latest in a series of industrial grade, high performance case sealers from Little David *.

The LD-16AR is a high speed, fully automatic case sealer capable of sealing a random assortment of box sizes without an operator. The simultaneous, two stage operation ensures accurate box measurement and efficient processing. Available with side belt or bottom belt drive.



PERFORMANCE & DESIGN FEATURES:

HIGH PERFORMANCE

Case sealer processes up to 15 cases per minute at 150' per minute belt speed providing the throughput you require.

Accurate

Ultrasonic sensing is used to detect box width and a linear transducer measures the height ensuring repeatable performance and box processing.

VERSATILE

Capable of processing a wide variety of random size cases at high speeds. Two stage operation features indexing gate, live rollers to center the box, folding and sealing. Accommodates both 2" and 3" tape cartridges.

SAFE

Moving parts are fully guarded. Interlocking safety gates power down the machine when accessed. Features a UL listed electrical panel with safety monitor relay.

LOVESHAW

LITTLE DAVID LD-16AR



The Little David [®] LD-16AR is a fully-automatic case sealer designed for processing a random assortment of case sizes. The LD-16AR automatically adjusts for the height and width of the case presented to it by a powered conveyor. Two stage operation accurately measures the case size and preadjusts the top tape head. Cases are top and bottom sealed with 2" or 3" tape using the latest CaseLocker™ 60 tape cartridges.

LITTLE DAVID [®] PERFORMANCE & DESIGN FEATURES:

- Processes random size cases at high speeds, up to 15 cases per minute.
- High precision box measurement with ultrasonic sensing.
- Interlock safety gates for operator safety and safety monitor relay for proper function.
- Interchangeable cartridges (top and bottom)

OPTIONS OF THE LD-16AR:

- Casters
- Secondary Emergency Stop
- 3 Phase Motor
- Low Tape Alarm
- No Tape Detection/Tape Assurance
- Random Top Squeezers
- Random Side Belt Drive
- Increased Conveyor Height(28"-38")

CaseLocker™ 60:

This high-performance tape cartridge features positive tape cutting, light actuation for weak boxes, toolless roller/blade change, and is capable of running at speeds up to 200 ft./min.



SPECIFICATIONS:

Power Requirements:
110 volts, 60 cycle, single phase
(Requires 2 AMP Circuit)

Air Requirements:
6 SCFM @ 80 psi

Operating Speed:
Continuous belt drive;
150' per minute (45.72 m/min).

Closure Material:
Pressure Sensitive Tape

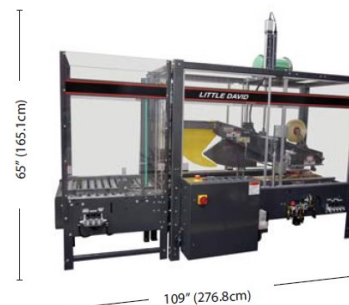
Weight:
1,500 lbs. (680 kg.), fully crated

CASE CAPACITY:

Length: 8" - 24"
Width: 4-1/2" - 20"
Height: 4-1/2" - 20"

MACHINE DIMENSIONS:

65" (165.1cm) high
109" (276.8cm) long
44" (111.7cm) wide



DISTRIBUTED BY:

Printed in America

© 2015 LOVESHAW

www.youtube.com/loveshaw
<http://twitter.com/loveshaw>

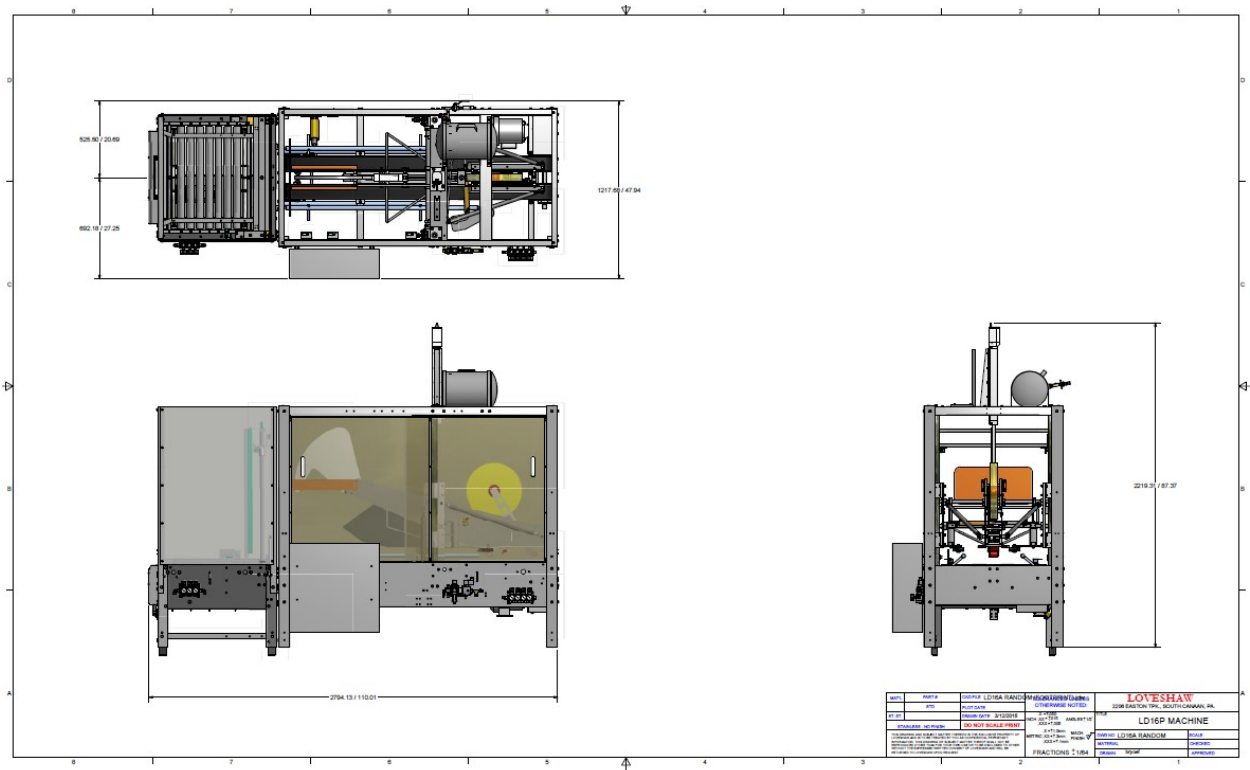


LOVESHAW

2206 East Turnpike
P.O. Box 83, South Canaan, PA 18459
Tel: (570) 937-4921 Fax: (570) 937-3229
Toll Free: (800) 572-3434

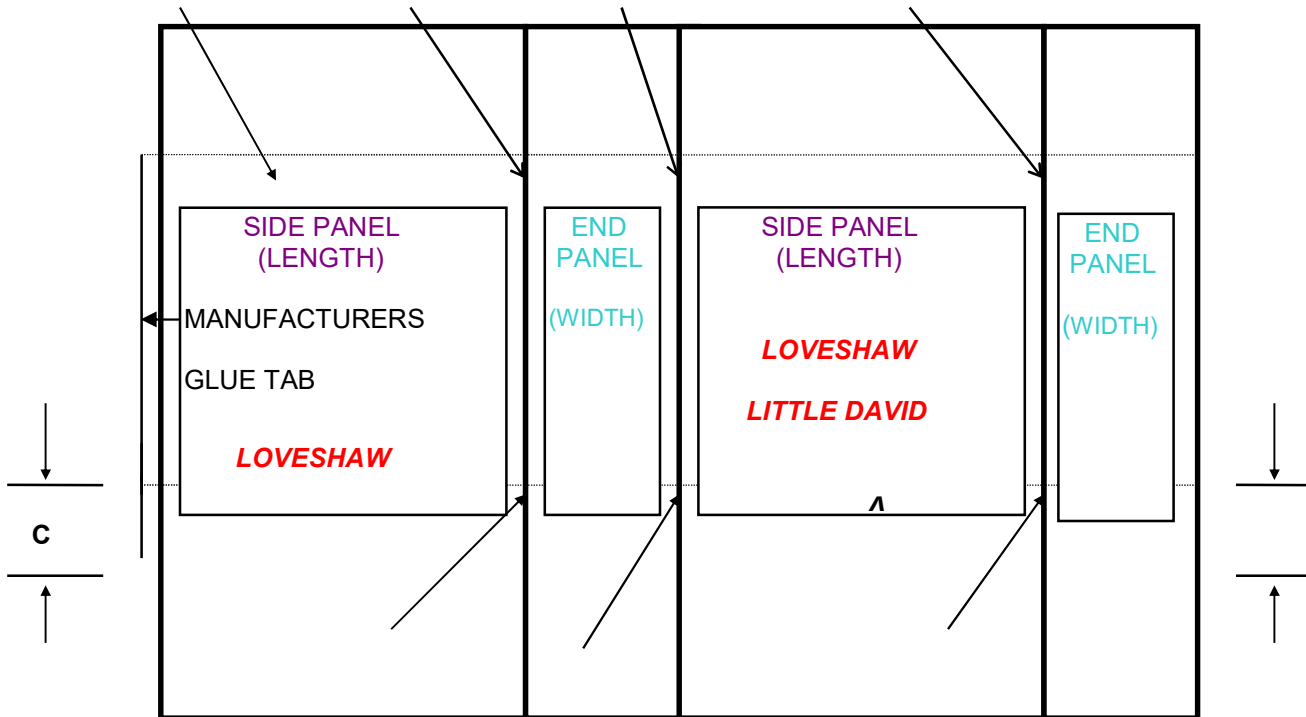
LOVESHAW Europe

Unit 9 Brunel Gate
West Portway Industrial Estate
Andover, Hampshire, England SP10 3SL
Tel: (1264) 357511 Fax: (1264) 355963



BLANK CONFIGURATION FOR STANDARD FOOT PRINT

LOVESHAW



RECOMMENDED CORRUGATED SPECIFICATIONS

- A) **THE PRINTING** SHOULD BE UPRIGHT ON **THE SIDE PANEL (LENGTH)** WITH THE **END PANEL (WIDTH)** ON THE LEFT SIDE WHEN BEING HANDLED IN A STANDARD FOOTPRINT VERTICAL CASE FORMER.
- B) SCORING AND SLOTS MUST LINE UP, ESPECIALLY AT THE MANUFACTURES JOINT. 3/8" RECOMMENDED SLOT WIDTH.
- C) THIS FLAP LENGTH IS TO BE MADE SHY CUT OR SCANT CUT SO THAT WHEN FLAPS ARE FOLDED, THERE IS 1/8" SPACE BETWEEN THEM.
- D) SCORING SHOULD BE MALE TO FEMALE OFFSET WITH THE FEMALE ON THE INTERIOR SURFACE.
- E) **MANUFACTURES GLUE TAB** SHOULD NOT EXCEED THE HORIZONTAL SCORE LINES. I.E.: NOT ON THE BOTTOM FLAPS.